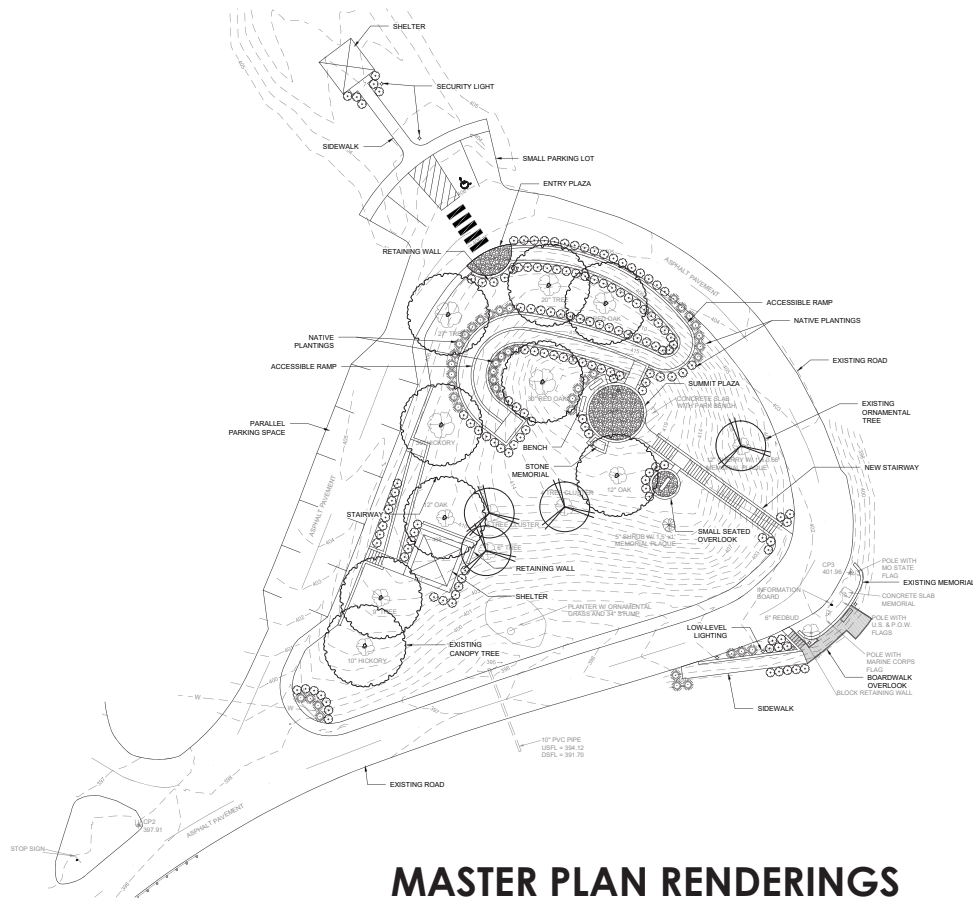


CAPE ROCK PARK



ABOUT THE PROJECT

Located in the northeast part of the city on North Cape Rock Drive, the park contains 21.3 acres and offers a breathtaking view of the Mississippi River. The park is mainly undeveloped in an effort to promote the natural area located on the west side of the property. The City has developed a conceptual master plan for this scenic park. The plan includes an accessible ramp, new shelter, scenic overlook, new stairs and railings, and a stone plaza area with interpretive panels highlighting the area's history and life along the river.

PROJECT IMPACTS & BENEFITS

- Provides accessibility for all
- Improvements to park safety
- Promotes Cape Girardeau history for citizens and visitors



CITY of CAPE GIRARDEAU
PARKS & RECREATION DEPARTMENT

573-339-6340
www.cityofcapegirardeau.org/parks
parks@cityofcape.org