



Capital Improvements

Sales Tax Renewal Vote Aug. 6, 2019

The City of Cape Girardeau includes the public servants and public assets that together provide the infrastructure, safety and quality of life services that support day-to-day life in Cape Girardeau.

In support of those services, voters approved two, ¼-cent Capital Improvement Sales Taxes (CIST) in the 1990s. The first provided for water treatment plant renovation and system improvements. This included transitioning Cape Girardeau customers from Mississippi River water to well water. This tax was extended by voters in 2011 to 2037 for a state-of-the-art Wastewater Treatment Plant on flood-free higher ground. The other tax is expiring at the end of 2019 unless extended to 2034 for the projects below. It was originally approved by voters to improve the sewer system and eliminate combined sewer and stormwater pipes.

Public Needs, Public Assets

Sales taxes invest regional funds locally

- 2011 - New Wastewater Treatment Facility (CIST)
- 2014 - Public Safety Trust Fund 2 (Fire Tax)
- 2015 - Transportation Trust Fund 5 (TTF5)
- 2018 - Parks, Recreation & Stormwater 2
- 2019 - Capital Improvement Sales Tax (CIST)
- 2020 - Transportation Trust Fund 6 (TTF6)

Most taxes “sunset” to give citizens a chance to assess past improvements, review future proposals, and use their vote to decide the future of Cape Girardeau. Residents and visitors both pay the City’s 2.75% sales tax rate.

Capital Improvement Sales Tax 2020-2034



RESILIENT WATER SYSTEM

Replacing old, galvanized pipes with stronger PVC reduces leaks, breaks and boil water advisories. Over time, galvanized pipe can put users at-risk for ironized, red water. Water plant and pressure improvements are also proposed.



CONNECT ECONOMIES

To grow and thrive, many local businesses and industries need access to a real commercial airport with general aviation amenities. To provide for business, the airport needs a replacement terminal and tower.



SAVE COMMON PLEAS

City Hall could return to its former home in the historic Common Pleas Courthouse. Secure access as a public building will preserve the structure for which the future was otherwise uncertain.



BETTER STREETS

The Transportation Trust Fund 6 vote in 2020 will remain critical to the renovation of city streets, but additional funding from the CIST could fix more streets faster.

Capital Improvements Renewal Will Leverage Other Funds

	Sales Tax	Casino Fund	FAA Grant	Totals
Water	\$18,000,000	-	-	\$18,000,000
Streets	\$7,500,000	-	-	\$7,500,000
City Hall	\$6,000,000	\$6,000,000	-	\$12,000,000
Airport	\$4,250,000	-	\$2,550,000	\$6,800,000
Bond Interest	\$4,700,000	-	-	\$4,700,000
Contingency	\$50,000	-	-	\$50,000
Totals	\$40,500,000	\$6,000,000	\$2,550,000	\$49,050,000

Frequently Asked Questions

How much will these projects cost?

If the CIST is renewed, then these other funds can also be applied to the projects (above).

Is this a new tax?

Will this cost me more?

No. You'll pay exactly what you've been paying but gain important infrastructure, economic development, and community improvements.



A 1/4% tax costs one-fourth of a penny in tax for every dollar spent.

Why is the City always asking for MORE taxes?

We're not. There has not been a new sales tax since 2008's Parks, Recreation & Stormwater sales tax. The CIST is a renewal from 1994. The City has traditionally asked voters to consider specific projects with specific timelines.

What is my water bill for?

Operations. The Capital Improvement Sales Tax will

pay for the "capital" needs: buildings, pipes, and other long-term investments. The water bill covers "operations" – the people, supplies, and other things needed for day-to-day service activity.

Why does the City need an airport?

Business. Anyone can fly United Airlines in and out of Cape to anywhere in the world which is great for residents, students, and tourism. In addition, our local airport benefits job creation. Better access for business means a stronger economy for everyone. The Airport is also a key facility in emergency response and recovery.

Why do you need to move City Hall?

Currently, it is too expensive to maintain, not secure and not accessible. Many people have a hard time or simply cannot get upstairs. With an empty Common Pleas, the City is already facing a \$3.5 million

cost to stabilize the historic structure and no tenants to maintain it. In addition, there is a deed restriction on the Common Pleas property limiting it to public use. Moving City Hall into Common Pleas will preserve it, and open Lorimier School to public-private partnership and conservation.

Will this tax make every pothole go away forever?

No. But added to TTF funds (vote every five years, again in 2020) we can fix more streets.

- ✔ Same tax
- ✔ Preserve Common Pleas and City Hall
- ✔ Improve the Airport
- ✔ Fix more streets faster
- ✔ Resilient water system

✔ **VOTE
AUG. 6,
2019**

Few things are so important, but we rarely think of it, like water. Estimates vary but we each use 80-100 gallons per day to cook, clean, bathe, or drink and many of the services and products we use depend on water.

Resilient Water System Critical Infrastructure

Continued investment keeps
our water safe, healthy, and
reliable 24/7.

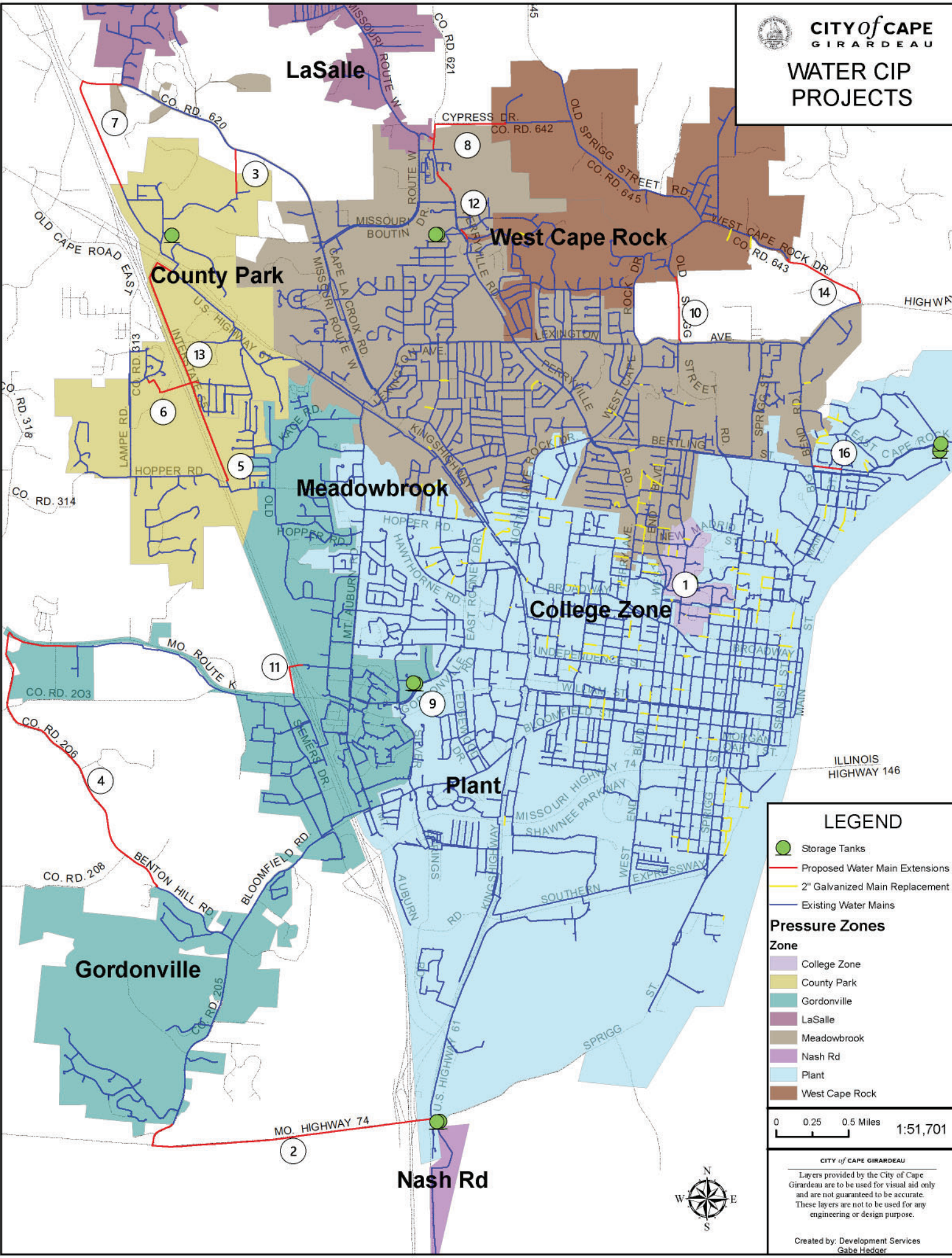
\$18 million

Capital Improvements Sales Tax Renewal - Water System Improvement Projects

- 1) Needed improvements in area around Southeast Missouri State University
 - 2) 11,600' extension of 12" distribution main along CR 205, Highway 74, to Plant 2
 - 3) 1,600' extension of 8" main from Franks Lane to CR 620
 - 4) 11,700' of 12 inch distribution main along County Road 206 from Rt. K to Benton Hill Road
 - 5) Cypress Road Pressure Reducing Valve Installation
 - 6) 1,800' of 12" main from Scenic Drive, across Interstate 55, connecting to Deerfield Estates Subdivision
 - 7) 5,600' feet of 12" main along future Veterans Memorial Drive north of Indoor Sports Complex, connecting to CR 620
 - 8) 3,800 feet of 14" main - Cypress from Perryville to Kelley Court, Perryville from Cypress to Route W, & Route W from Perryville to Boutin
 - 9) Paint/Preserve Gordonville Tank No. 2
 - 10) 2,900' of 12" main along Old Sprigg St. from Lexington to east of Hidden Valley Dr.
 - 11) 1,500' of 16" main along Percy, to the west side of Interstate 55, connecting at SE corner of Kirchdoerfer Dairy Farm
 - 12) Construct 1,160' of 14" main along Perryville Road from Sue Annes to Monterey and El Rio to Lakeshore
 - 13) 9,500 feet of 12 inch main along Veterans Memorial Drive from Hopper to Kingshighway
 - 14) 3,300' of 12" main along West Cape Rock Drive from Shadow Ridge to Big Bend Road
 - 15) 1,000' of 12" main for emergency interconnect
 - 16) Construct 1,000' of 8" main, line two 14" mains between Fitzgerald & Green Acres from Rand to Big Bend.
- Other Projects**
- City-wide - 2" galvanized pipe replacement
 - Solids handling improvements at Plant 1, evaluation of Plant 2 for upgrades, complete projects identified from the Plant 2 evaluation, and update of the 2011 Master Plan
- (see map on reverse)**



WATER CIP PROJECTS



- LEGEND**
- Storage Tanks
 - Proposed Water Main Extensions
 - 2" Galvanized Main Replacement
 - Existing Water Mains

- Pressure Zones**
- Zone**
- College Zone
 - County Park
 - Gordonville
 - LaSalle
 - Meadowbrook
 - Nash Rd
 - Plant
 - West Cape Rock

0 0.25 0.5 Miles 1:51,701

CITY of CAPE GIRARDEAU
 Layers provided by the City of Cape Girardeau are to be used for visual aid only and are not guaranteed to be accurate. These layers are not to be used for any engineering or design purpose.
 Created by: Development Services
 Gabe Hedger

An airport is a critical part of any regional hub focused on economic growth. Business travelers, residents and visitors can all enjoy easy access to Cape Girardeau and the world via a quick flight to Chicago on United Airlines.

Airport Improvements

Economic Infrastructure

Investing in our airport is an investment in local jobs and economic strength.

\$4.25 million



Capital Improvements Sales Tax Renewal - Airport Improvements

The Cape Girardeau Regional Airport is one of few commercial airports in the state, and the only one in our region. The Missouri Department of Transportation notes Cape's scheduled commercial airline flights and high level of general aviation activity. Airports like Cape's provide access to the national and global economies and require investment.

Because of these critical national-global connections, the Federal Aviation Administration (FAA) also invests in airports like Cape. Commercial air travel exceeding 10,000 enplanements will unlock \$2.55 million in additional funds from the FAA.

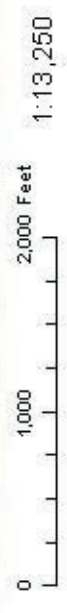
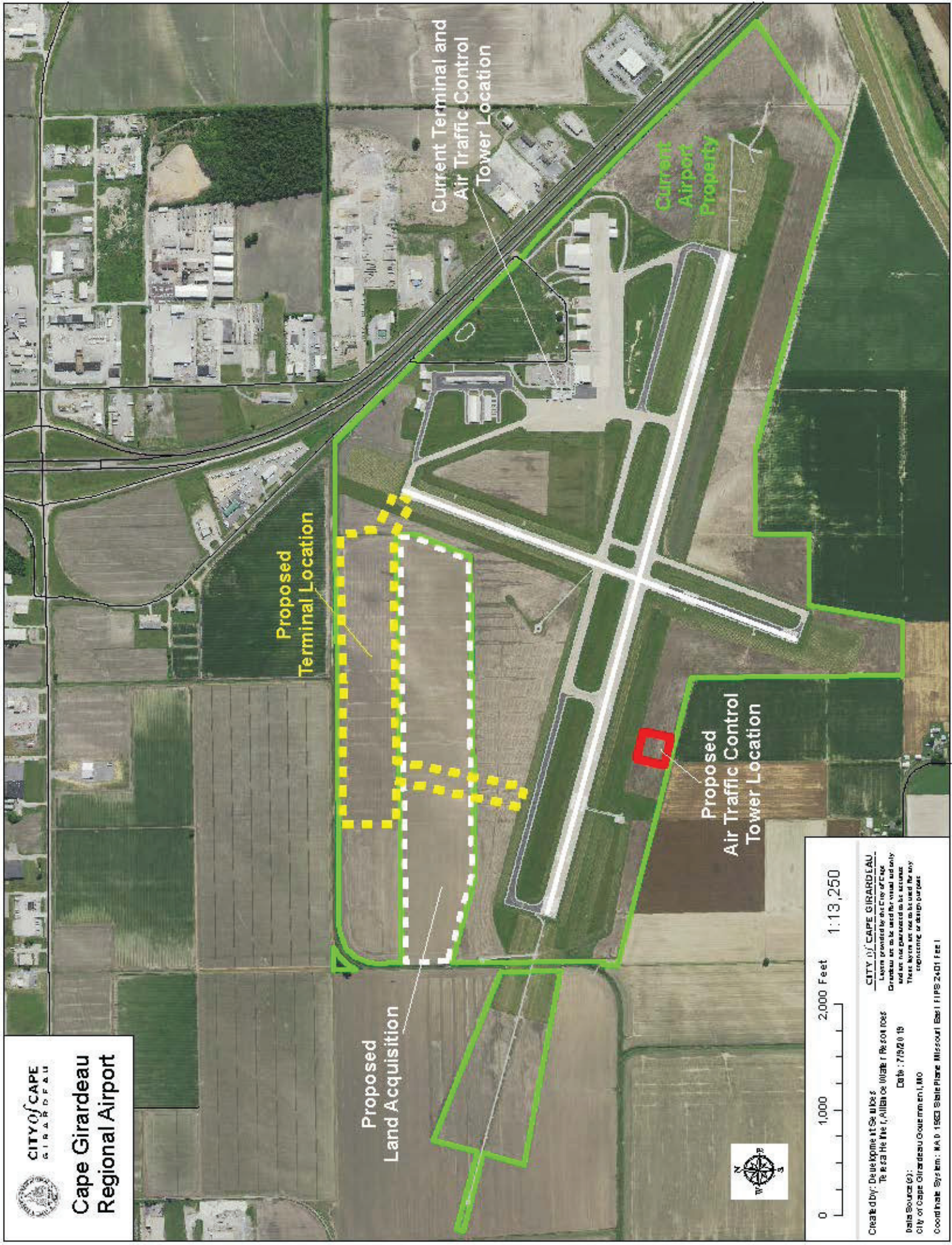
Leveraging the FAA and proposed CIST funds will provide the necessary \$6.8 million to build a new control tower and terminal for the regional airport.



While access to supplies and people provided by the airport is important to the economy in everyday life, the airport provides this same critical access in the event of an emergency. Response to, and recovery from, natural disasters like tornadoes and earthquakes requires the efficient movement of resources. In these events, ground travel can be too slow or not available. In addition to the economic and leisure travel roles, our airport is also a critical link in our emergency plans.



Cape Girardeau Regional Airport



Created by: Dave Krome at SKI Associates
 To: Bill Heiser, Allan Weiser, Rick Ross
 Date: 7/15/2019
 City of Cape Girardeau Government, MO
 Coordinate System: NAD 83 StatePlane Missouri East FIPS 2401 Feet
 CITY OF CAPE GIRARDEAU
 Layers provided by the City of Cape Girardeau are to be used for visual aid only and are not guaranteed to be accurate. These layers are not to be used for any engineering or design purposes.

Cape Girardeau's Common Pleas Courthouse was one of few Missouri Common Pleas courts. It stands today as a symbol of Cape Girardeau, community and governance and as an iconic part of downtown. Returning City Hall to its former home will preserve the historic structure, and secure access to the building for future generations.

Common Pleas & City Hall Civic Infrastructure

Investment saves a historic landmark and reduces costly ongoing maintenance of two historic structures.

\$6 million



Capital Improvements Sales Tax Renewal - Common Pleas & City Hall

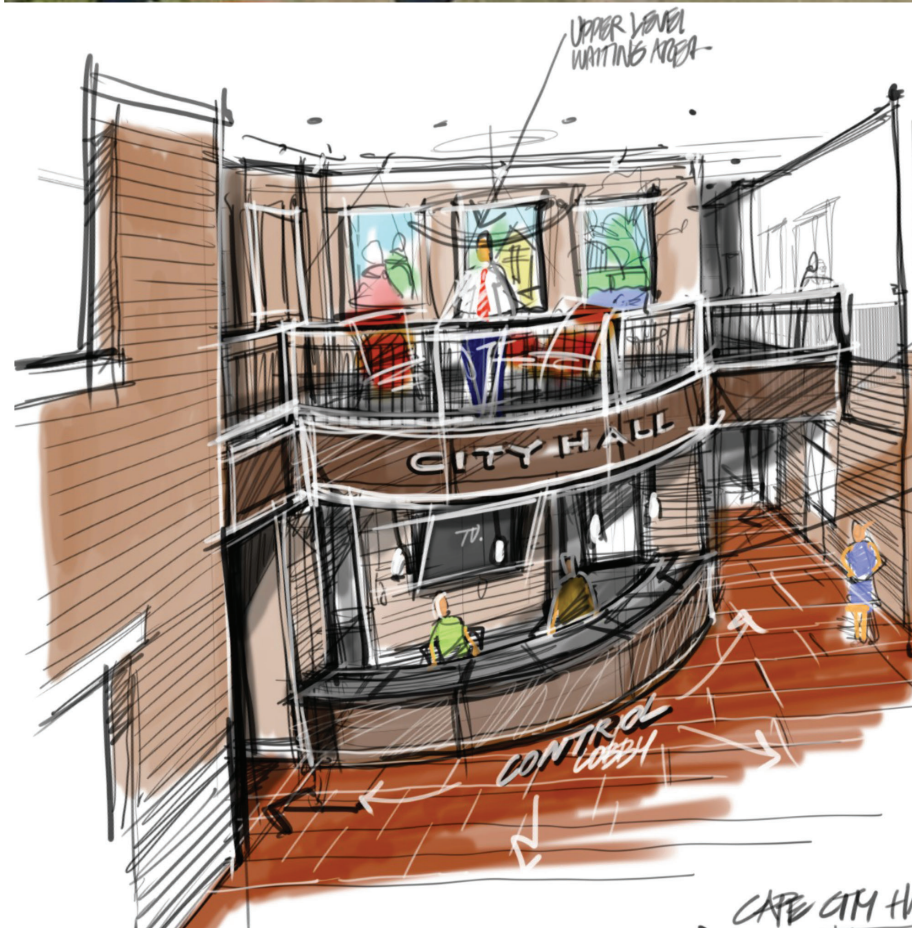
A year ago, pressure to replace or renovate City Hall was mounting. The building and HVAC need significant repairs and redesign. It looked at that time as if City Hall would be torn down and rebuilt for \$20 million while the historic Common Pleas Courthouse at Ivers Square would lay empty with repair needs unfunded and unmet. The CIST proposal will save the landmark building by moving City Hall into an expanded Common Pleas and annex facility for closer to \$12 million (includes \$6 million matching casino funding). The proposal includes a renovated, ADA accessible, secure facility. Staff also discussed moving current customer service agents to other public offices across the City – a move that frees up space at Common Pleas, and gives customers more options city-wide. The City aims to preserve the old Lorimier school by finding a suitable alternative use, such as a partnership with private business or another public agency.

See proposed building addition on reverse.



Common Pleas has been at the center of Cape Girardeau civic life for 165 years. Shortly after the construction of the courthouse, the Civil War erupted and the building served as a military headquarters, a prison for Confederate soldiers and Southern sympathizers, and a hospital. Over the years, the building was used for numerous political, social and religious functions.

Read more at cityofcape.org/CIST



What Happens at City Hall?

Development Services, and the support services that help Public Works, Parks & Recreation, Fire & Rescue, the Regional Airport and the Police Department function, all work out of City Hall. Those services include: Information Technology, Human Resources, the City Attorney, Public Information, Finance Division, City Management and the City Clerk's Office. Council convenes for public meetings at City Hall, but they are not full-time workers with offices. Customers currently come to City Hall to setup water/sewer/trash service, and get various business and contractor licenses.



The separate Transportation Trust Fund sales tax is a 5-year program. An additional \$500,000 per year from CIST will boost street repair progress.



City Streets Transportation Infrastructure

City workers, Council and residents all recognize the need for increased investment in street repair.

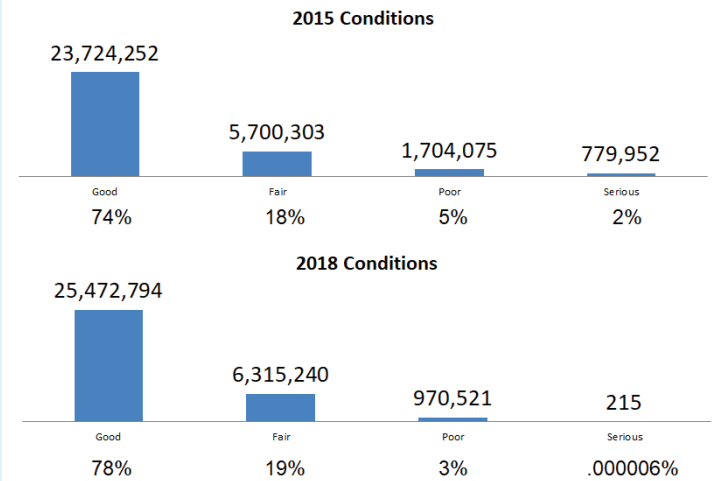
\$7.5 million

Capital Improvements Sales Tax Renewal - Accelerated Street Repairs

The City of Cape Girardeau maintains more than 230 miles of street and 22 miles of alleyways, which is roughly the same distance as a drive to St Louis and back. Many of our streets were built before the developers were required to build them to more durable specifications. Most of our streets are lighter-colored concrete and the remaining streets are dark asphalt. Street Maintenance efforts are coordinated by both our Public Works and Development Services departments.

Evaluations are done by Public Works inspectors on approximately half of our city streets each year. Each street segment is given a rating number which falls into classifications from good to failed. This data, along with continuing city evaluations and public input throughout the year help prioritize street work. The Public Works Department has two crews of five people who typically work on street repairs when weather allows, as well as many other duties like debris clearing.

MICRO PAVER PROGRAM



Street repair is an ongoing effort. Every winter, ice and snowplows create more potholes and everyday use creates wear and tear. While many streets are in good condition, and TTF remains critical to that result, additional funding will enhance repair progress.



BETTER STREETS



City crews work hard to maintain over 233 miles of City streets. Programs like TTF and the proposed CIST funds would help fix more streets faster.



RESILIENT WATER SYSTEM



The CIST proposal includes evaluation of the Water Treatment Plant, repair and maintenance. It also includes improved pressure zones for better daily use at home and better fire

protection in addition to replacing all 2" galvanized water mains with 6+ PVC for an overall better quality of water for years to come.



CONNECT ECONOMIES

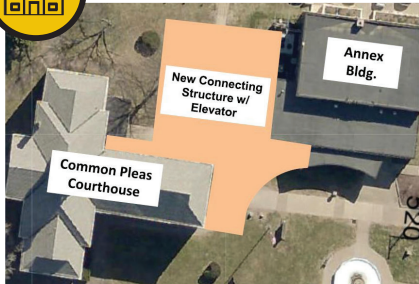


MODOT notes Cape Girardeau Regional Airport as the only Commercial airport in southeast Missouri. In addition to United flights to and from Chicago, MODOT

recognizes Cape's high level of general aviation activity. Airports in this role provide access to the national and global economies.

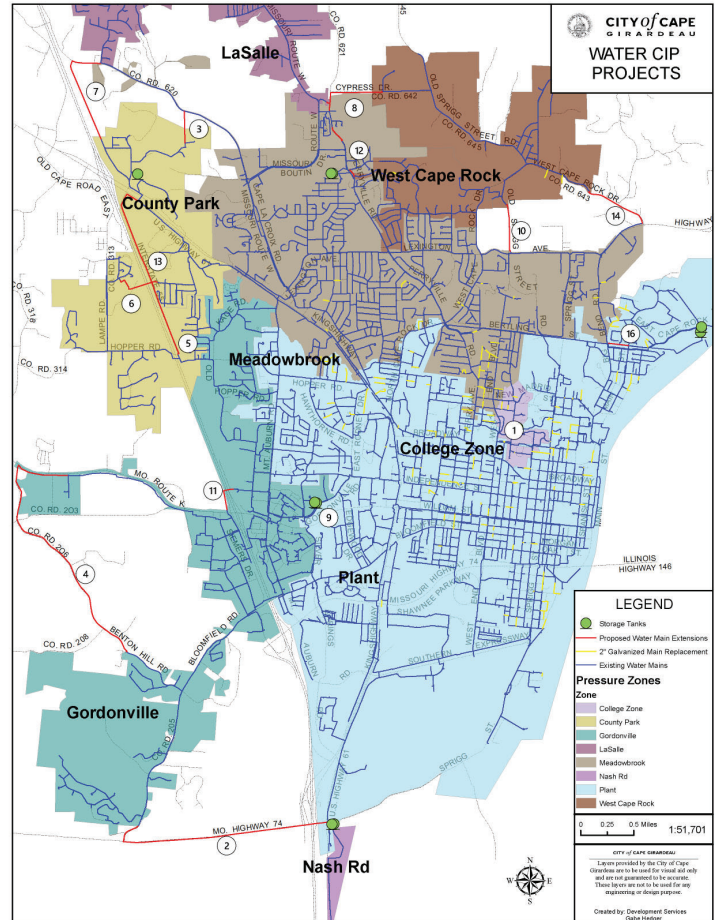


SAVE COMMON PLEAS / CITY HALL



A year ago, it looked like City Hall would be torn down and rebuilt for \$20 million while the historic Common Pleas Courthouse at Ivers Square would lay empty with repair needs unfunded and unmet.

Instead, moving City Hall into Common Pleas will secure access to the iconic landmark for closer to \$12 million, with half coming from the casino revenue.



1/4-Cent Capital Improvement Sales Tax



- ✔ Keep the tax the same (no increase)
- ✔ Preserve Common Pleas/City Hall
- ✔ Improve the Airport
- ✔ Fix more streets faster
- ✔ Improve/Maintain water system

**VOTE
AUG. 6,
2019**